

EUTRAC®

REV DATE: 7-19-17

99-779- Multi Adapter, 120V

2~, 120V adapter w/o data

Specifications:

Adapter fabricated of self-extinguishing polycarbonate according to UL94 class VO. Highly compact low profile design provides a clean unobtrusive appearance on track. Double locking mechanisms allow for connections of heavy track lights. Internal mechanism is designed with cable terminals and nickel plated spring contacts.

Standard design is w/o data (non-dimming) but can be converted by installing Data Bus Contact 99-698-0 (ordered separate)

Adapter can be installed as is, on the 233 series track with data bus, fixture will only light, no dimming capabilities w/o data bus contact added to adapter. (99-698-0)

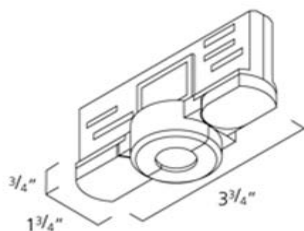
Adapter is provided with reverse polarity protection.

Ceiling mounted maximum load up to 22 lbs when using retaining collar 99-066. (See collar options for securing to track heads)

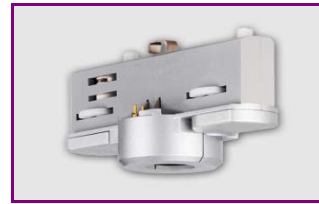
Double mechanical locking mechanism, provide perfect track fixing when using heavier track heads.

Colors:

-1: white, -2: Black, -3: Silver



This information is subject to change without notice.



99-779-3

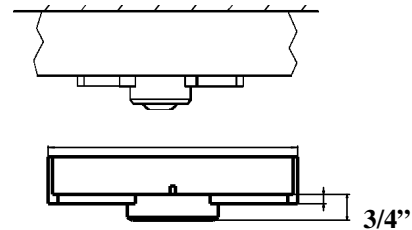


99-698-0

Adapter is shown with the Data Bus Contact installed.

Option:

99-698-0: With SELV – safety chip and gold plated spring contact pins. Pins make contact with 2 data bus copper contacts to transfer data. Contact must be ordered separate.

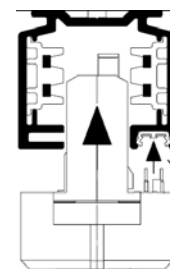


Low Profile Track:

From the face of the ceiling to the top of the adapter is 2". Adapter measures 3/4" above the track surface

Data Bus Contact:

To properly install the Data Bus Contact in the adapter, the gold plated pins must align with the two copper plated conductors on the track



Do not slide Light Fixtures along track when re-locating. Always remove fixture/adapter from track. Re-install in new location making sure to properly secure adapter back in track.

